



***Strengthening Families***

***Strengthening Families  
with Children with Developmental Disabilities***

A Model for Integrating Resources, Activities, and Services  
to Support Families

# The Mission of the Family Support Network



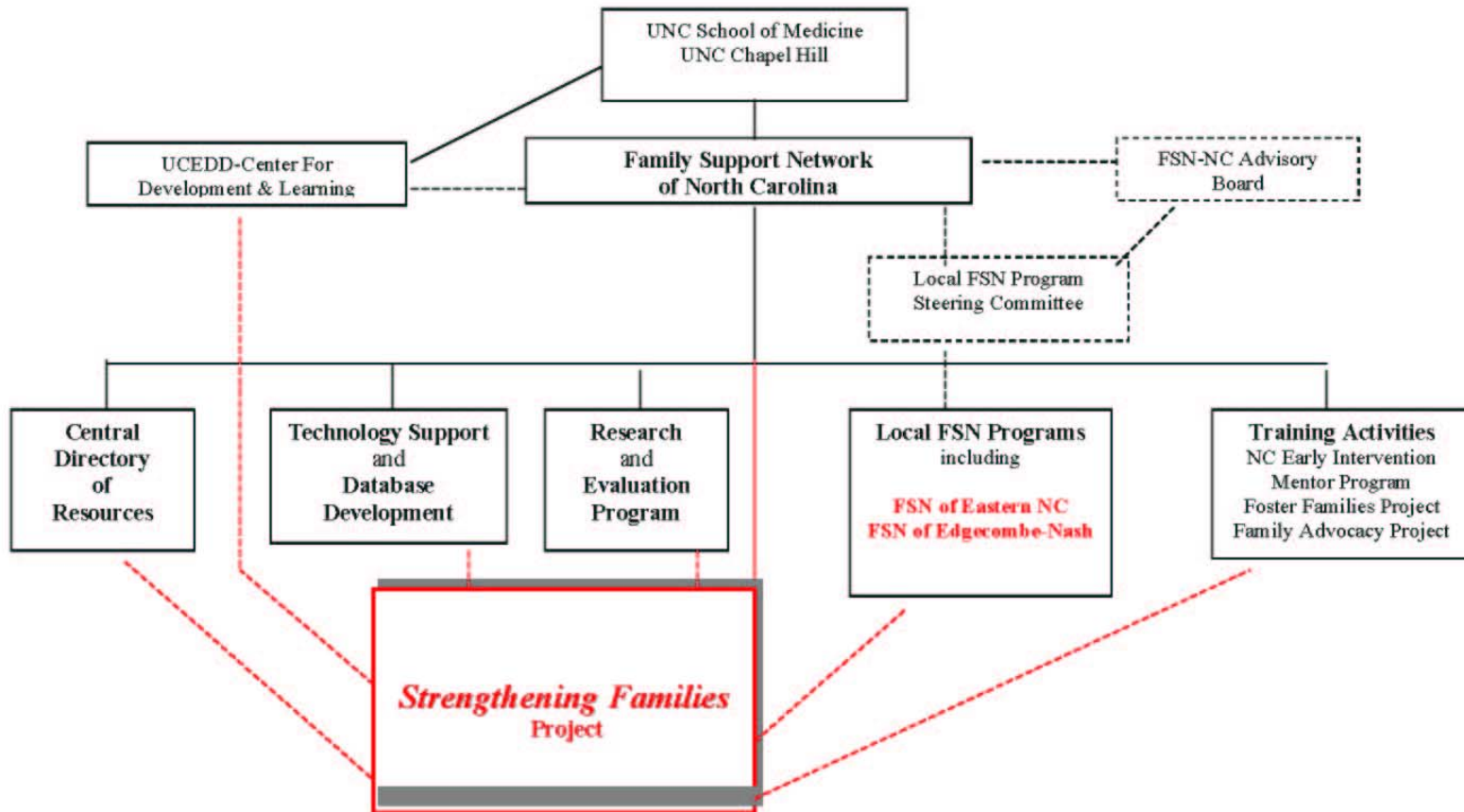
...to promote and  
provide support for  
families with children  
who have special  
needs

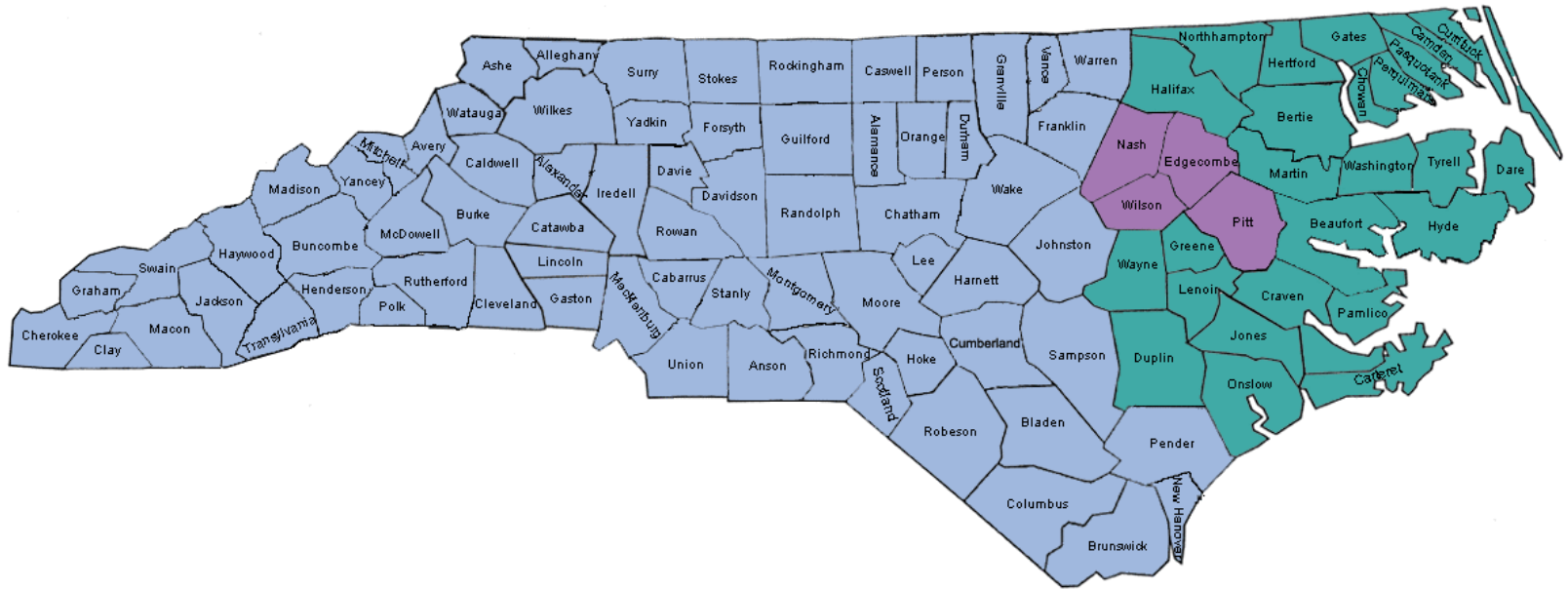


- Families of Children With Disabilities Support Act of 2000,  
**PL 106-402**
- Project of National Significance (PNS)
- Administration on Developmental Disabilities (ADD)/  
Administration for Children and Families (ACF)/  
US Department of Health and Human Services (DHHS)

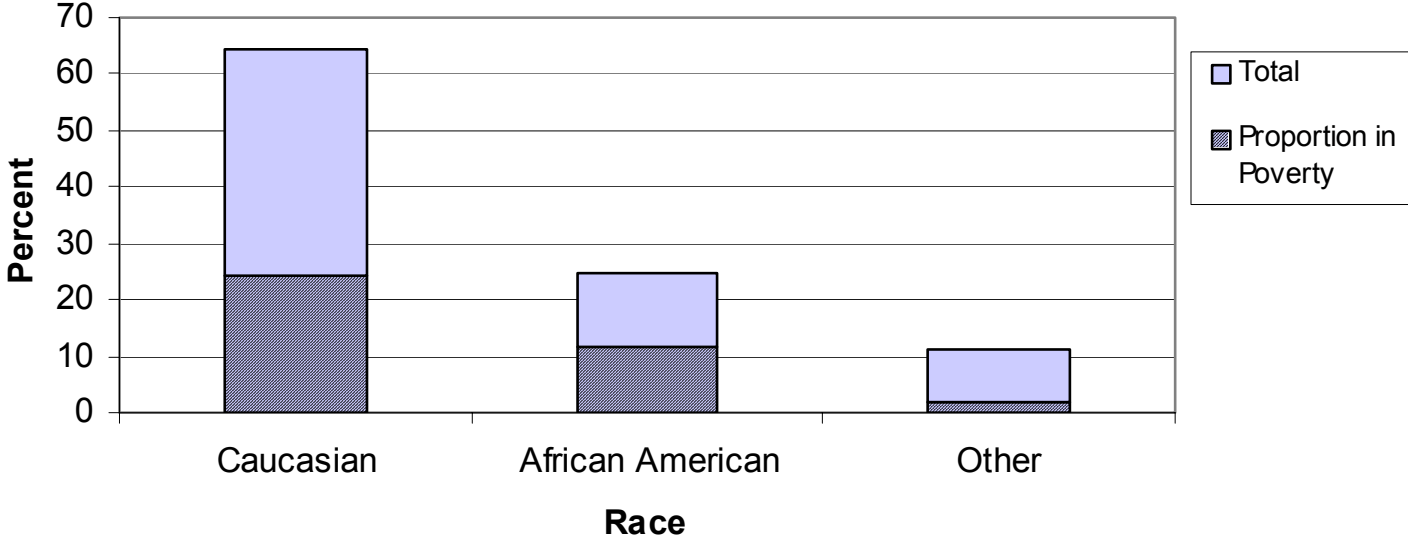
## FAMILY SUPPORT NETWORK OF NORTH CAROLINA

*Strengthening Families with Children with Developmental Disabilities:  
A Model for Integrating Resources, Activities, and Services to Support Families*

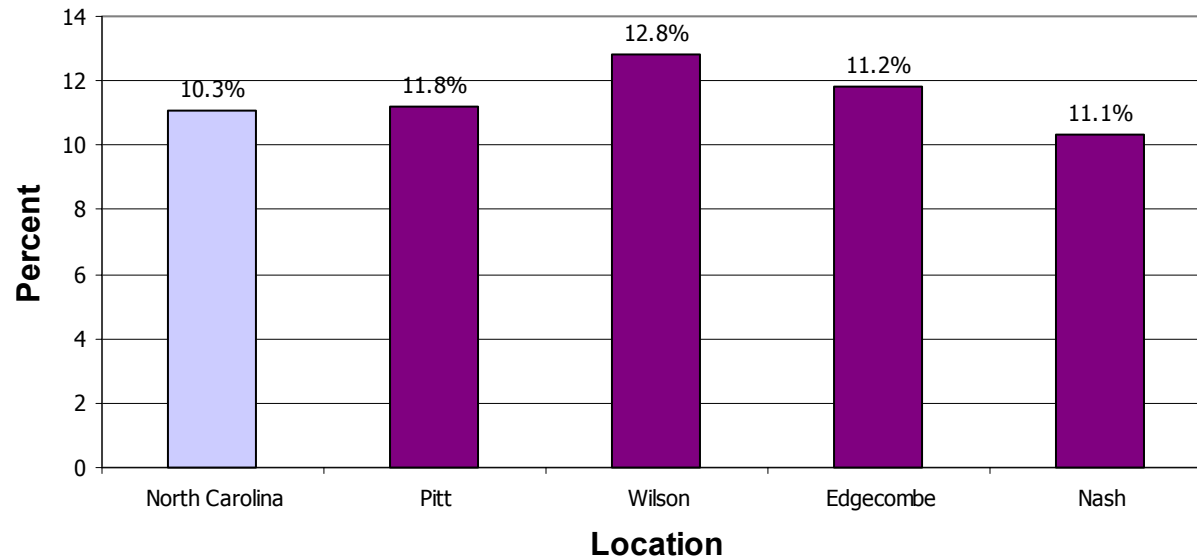




# Percentage of Children Under 5 in North Carolina Based on Race and Poverty



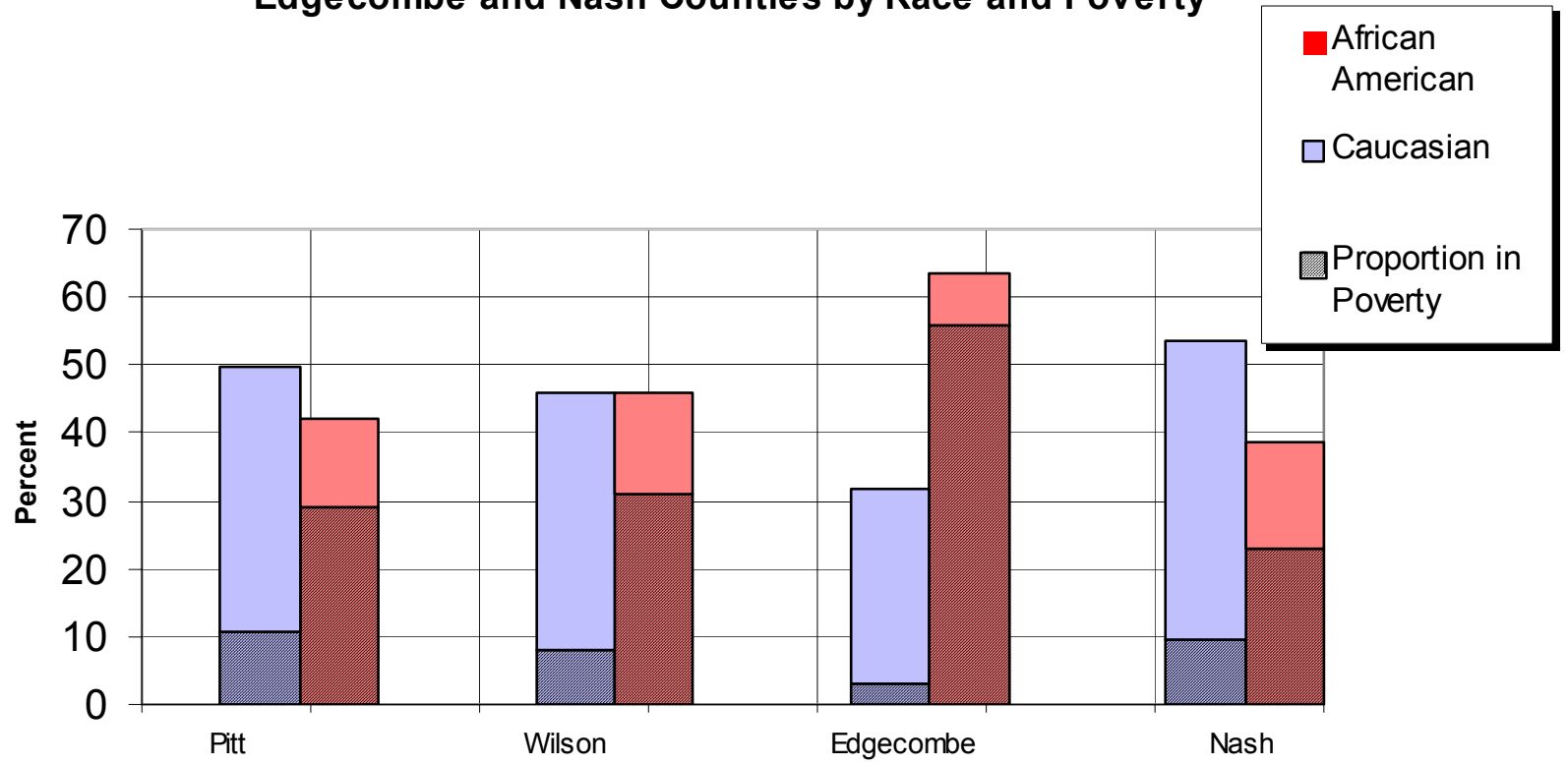
### Percentage Uninsured Children (0 - 17) in North Carolina and Pitt, Wilson, Edgecombe and Nash Counties



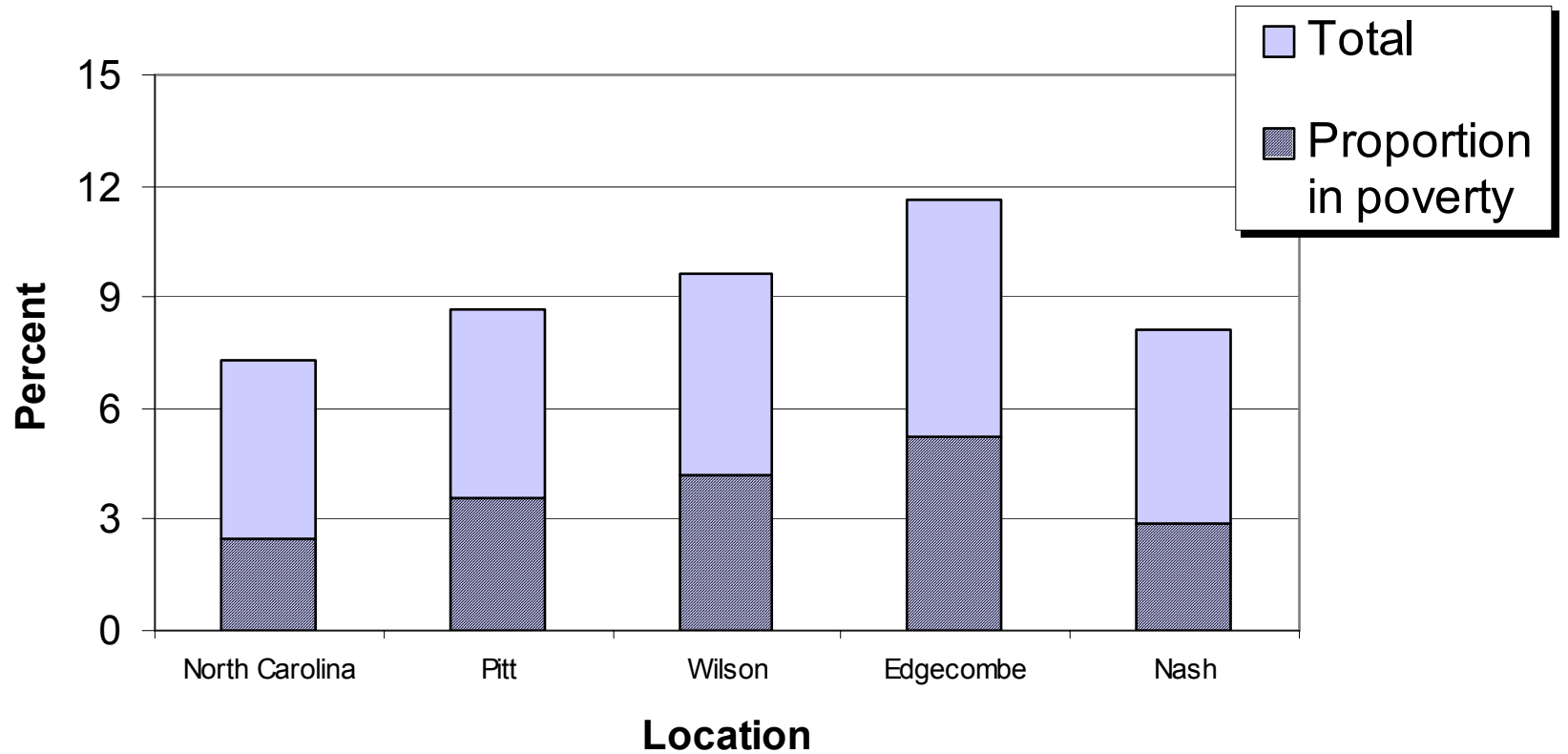
*2000 Census of Population and Housing - Sample Data Summary File 3 (SF 3), 2002*

*NC Data on Kids, 2002*

### Percentage of Children Under 5 in Pitt, Wilson, Edgecombe and Nash Counties by Race and Poverty



## Percentage of Single Mother Households Living in Poverty in North Carolina and Pitt, Wilson, Edgecombe, and Nash Counties



# Goals of *Strengthening Families*

- Goal 1 - Develop a plan for improving access and availability of family support in eastern North Carolina
- Goal 2: Develop a plan for gradual statewide replication of the proposed model

# Objectives for Goal #1

- establish a local family-led planning team made up of key stakeholders
- engage local and state-level formal and informal resources
- share information about existing family support resources, services, and activities among stakeholders
- use new technology and information systems to create an innovative, efficient, and effective strategy for increasing access to and availability of family support
- plan an outreach effort to improve access to family support services, resources, and activities
- develop a culturally appropriate model of family support that responds to the severity and intensity of the family's need
- prepare to pilot the model with at least 50 families in eastern North Carolina
- enlist the support of state level policy makers and planners for model implementation in eastern North Carolina
- develop a plan for outcome-based evaluation.

# Objectives for Goal #2

- establish a state family-led planning team
- analyze relevant state-level policies and protocols
- share information about existing family support resources, services, activities among participants
- engage state-level representatives of formal and informal resources
- analyze support needed across the state to use new technology and information systems to increase access to and availability of family support
- plan a statewide outreach effort to improve access to local family support services, resources, and activities
- engage appropriate representatives in evaluating the cultural relevance of the model of family support that is developed in eastern North Carolina for other communities in the state
- plan to support the four-county area in piloting the model with at least 50 families
- develop a system for communication among project participants, including a website and listserv
- develop a plan for gradual replication of the model
- develop a plan for outcome-based evaluation.

# Expected Results and Benefits

- Individual and Family levels
- Neighborhood and Community levels
- The State level

*And now our work begins...*